



MONTHLY MEMBERSHIP PROGRESS REPORT

District 323E2

Results as of: 12/31/2015

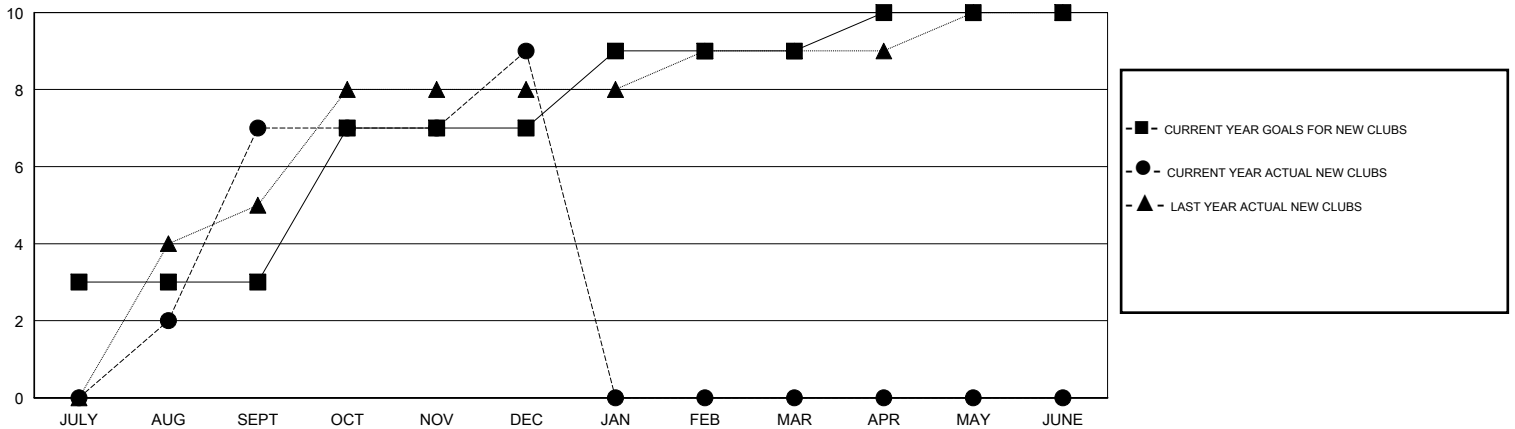
GMT: KAMLESH JAIN

LOCATION INDIA

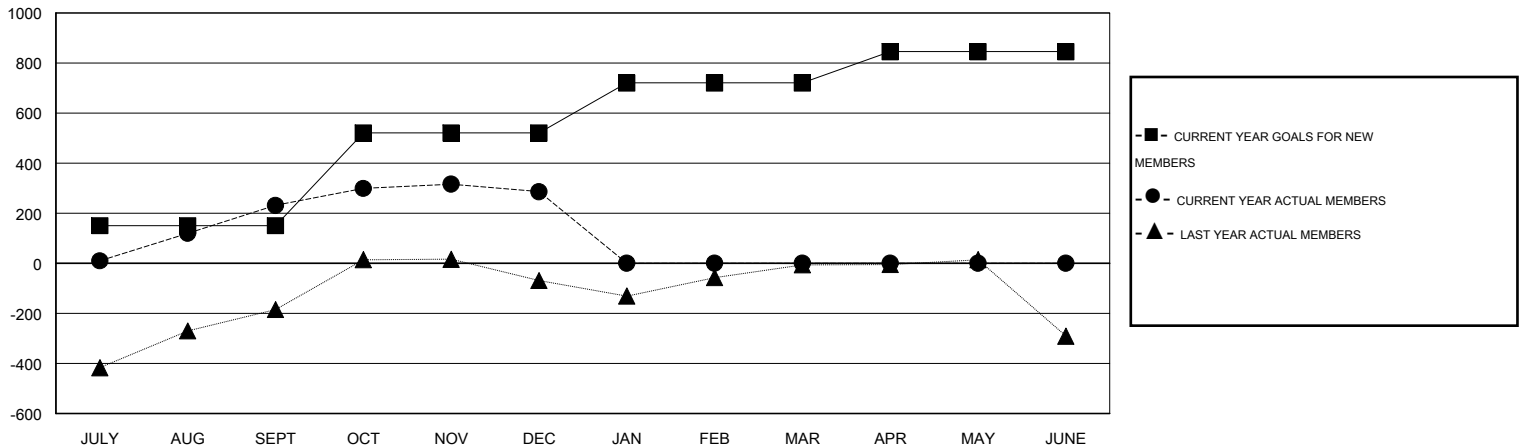
GMT CA 6

Clubs					Members				
RESULTS FOR 2015-2016					RESULTS FOR 2015-2016				
QUARTER	NEW CLUB GOAL	NEW CLUBS	DROPPED CLUBS	NET GAIN/LOSS	QUARTER	NEW MEMBER GOAL	CHARTER AND NEW MEMBERS ADDED	DROPPED MEMBERS	NET GAIN/LOSS
JULY/AUG/SEPT	3	7	1	6	JULY/AUG/SEPT	150	399	168	231
OCT/NOV/DEC	4	2	1	1	OCT/NOV/DEC	370	218	163	55
JAN/FEB/MAR	2	0	0	0	JAN/FEB/MAR	200	0	0	0
APR/MAY/JUNE	1	0	0	0	APR/MAY/JUNE	125	0	0	0

GOALS AND ACTUAL NEW CLUBS CUMULATIVE



GOALS AND ACTUAL MEMBERS CUMULATIVE



DROPPED CLUBS: 2	75 CLUBS OF 140 ADDED 1 OR MORE NEW MEMBERS	<u>GENDER DISTRIBUTION</u>	
		MALE	4,715 (83.57%)
<u>DROPPED MEMBERS</u>		FEMALE	927 (16.43%)
DECEASED	8	CLICK HERE FOR HEALTH ASSESSMENT DATA	
CLUB CANCELLED	37		
OTHER	286		
TOTAL	331	FAMILY UNIT MEMBERS	1,485
		HEAD OF HOUSEHOLD	699
		NON-HEAD OF HOUSEHOLD	786